

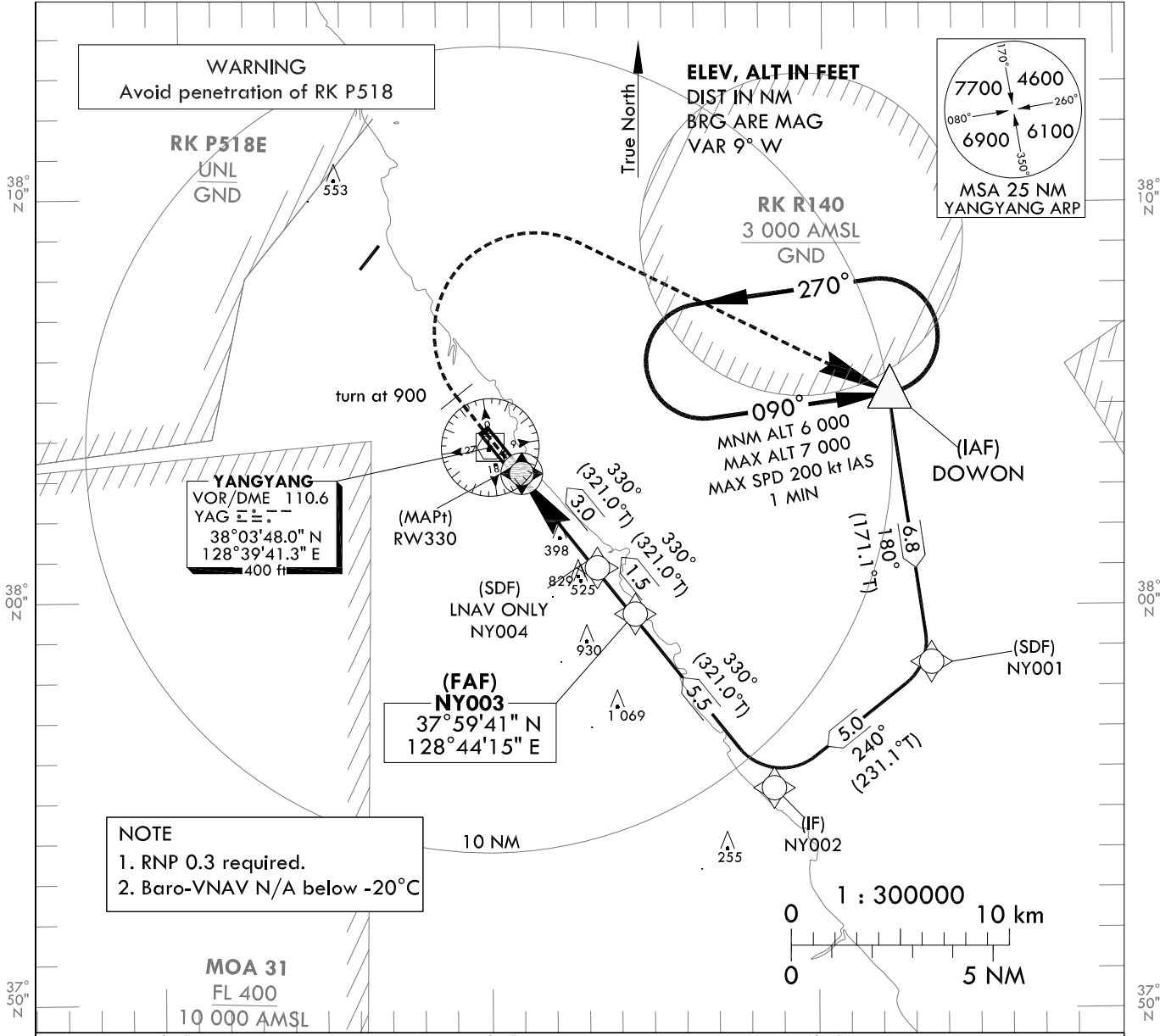
**INSTRUMENT
APPROACH
CHART - ICAO**

AERODROME ELEV 241 ft
HEIGHTS RELATED TO
THR RWY 33 - ELEV **227 ft**

GANGNEUNG APP 124.6
YANGYANG TWR 118.85
124.375

YANGYANG/InI(RKNY)
RNAV(GNSS) RWY 33

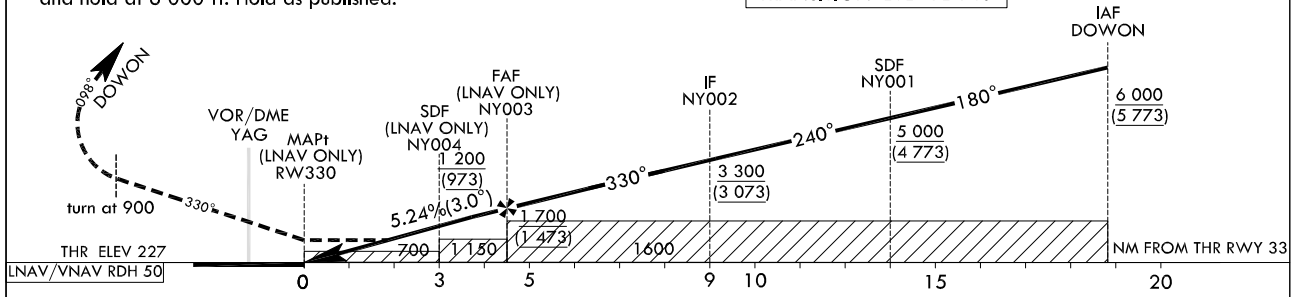
Note : Approach and circle-to-land under ICAO Flight Procedures.



MISSED APPROACH

Climb on HDG 329° to 900 ft, then turn right to DOWON and hold at 6 000 ft. Hold as published.

TRANSITION ALT 14 000
TRANSITION LVL FL 140



CATEGORY		DA(H)/MDA(H)	A	B	C	D	Knots							
STA	LNAV	FULL	700 (473)	1 500 m				Rate of descent	V/V fpm	318	478	637	796	955
		ALS INOP	2 200 m											
	LNAV/VNAV	FULL	640 (413)	1 200 m										
		ALS INOP	1 900 m											
Circling			700(460) 2 400 m	740(500) 2 800 m	1 160(920) 4 300 m	1 180(940) 4 600 m	* Timing Not authorized for defining MAPt. * Circling Not authorized west of RWY 15-33, area on between RDL 150 and RDL 315 YAG and area beyond 6 DME of between RDL 315 and RDL 360 YAG.							

Change : Information of landing minima.

AERONAUTICAL DATA TABULATION

Instrument Approach Procedure Coding Tables

RNAV(GNSS) RWY 33 - via DOWON(IAF)

Serial Number	Path Descriptor	Waypoint Identifier	Fly-over	Course/Track °M(°T)	Distance (NM)	Turn direction	Altitude (ft)	Speed (kt)	Coordinates	VPA/TCH*	Navigation specification	Remarks
001	IF	DOWON	-	-	-	-	+6 000	-	380514.5 N 1285213.8 E	-	RNP APCH	IAF
002	TF	NY001	-	180(171.1)	6.8	-	+5 000	-	375831.2 N 1285333.6 E	-	RNP APCH	SDF
003	TF	NY002	-	240(231.1)	5.0	-	+3 300	-	375522.3 N 1284838.8 E	-	RNP APCH	IF
004	TF	NY003	-	330(321.0)	5.5	-	+1 700	-	375940.6 N 1284414.9 E	-	RNP APCH	FAF
005	TF	NY004	-	330(321.0)	1.5	-	+1 200	-	380049.2 N 1284304.7 E	-	RNP APCH	SDF
006	TF	RW330	Y	330(321.0)	3.0	-	+700	-	380309.21 N 1284041.25 E	-3.00/50	RNP APCH	MAPt
007	VA	ALT	Y	330(321.0)	-	-	+900	-	-	-	RNP APCH	-
008	DF	DOWON	Y	-	-	L	@6 000	-200	380514.5 N 1285213.8 E	-	RNP APCH	MAHF

HOLDING PROCEDURE

Holding Identification	Path Descriptor	Waypoint Identifier	Fly-over	Course/Track °M(°T)	Turn direction	Altitude (ft)	Speed (kt)	Coordinates	VPA/TCH*	Navigation specification	Remarks
RNAV(GNSS) RWY 33	HM	DOWON	Y	090(081.4)	L	-7 000 +6 000	-200	380514.5N 1285213.8E	-	RNAV 1	1 Min (Outbound Leg)

* The term TCH equates to the use of the term RDH, within this context of the FAS data block.